

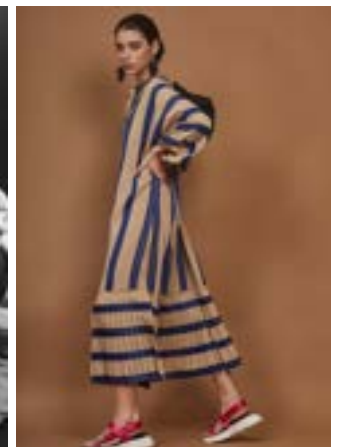


Natalia O.

Height _
172

Bust _ Waist _ Hips _ Shoes _
82 60 88 25

Eyes _ Hair _
brown brown



natalia o.

STAGE TOKYO
MODEL
AGENCY

R&M BLG. 402 3-5-17 Kita-Aoyama Minato-Ku Tokyo Japan 107-0061
<https://stage-models.com> +81 0[3]5414 5711